

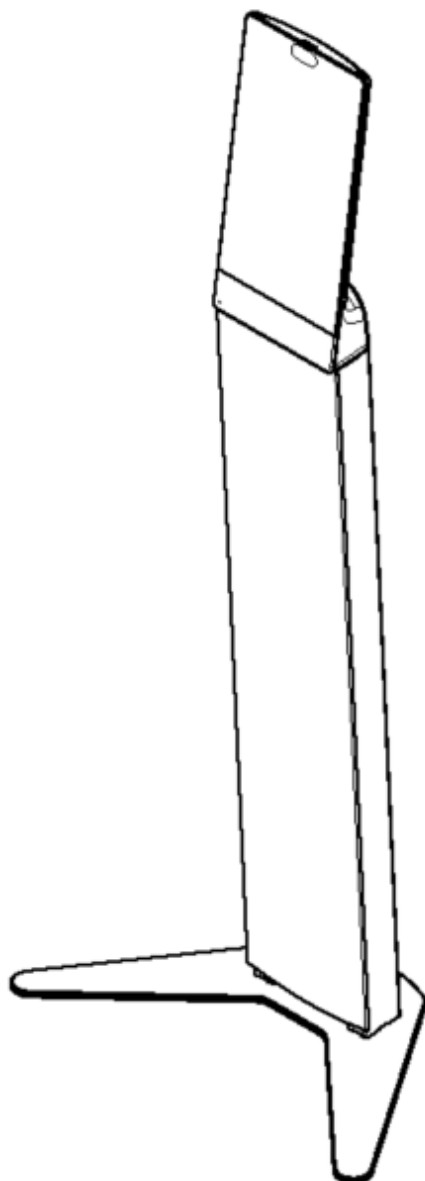


# Install Guide

---

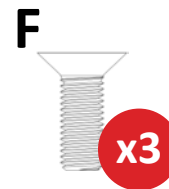
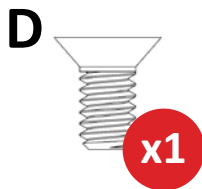
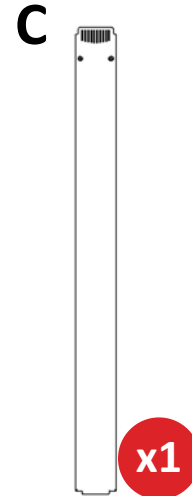
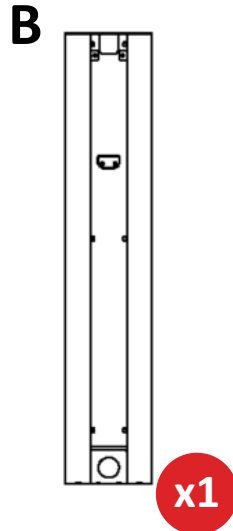
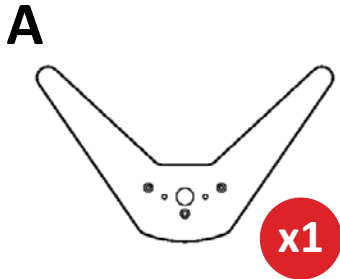
## Neat Frame Floor Stand

NEATFRAME-STAND



# PACKAGE CONTENTS

Included with Neat Frame Floor Stand:



A. Base plate [x1]

D. Flat 1/4-20 1 1/2" screw [x1]

B. Body column [x1]

E. Socket M6x1.0 10mm long screw [x2]

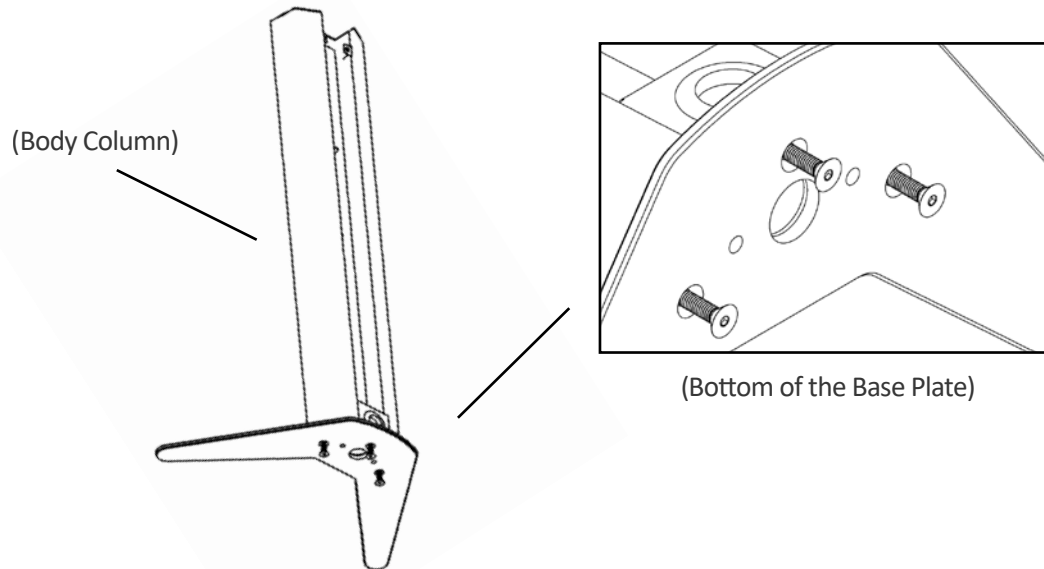
C. Rear cover [x1]

F. Flat 3/8-16 1.25" screw [x3]

## STEP 1

### Secure base to body column

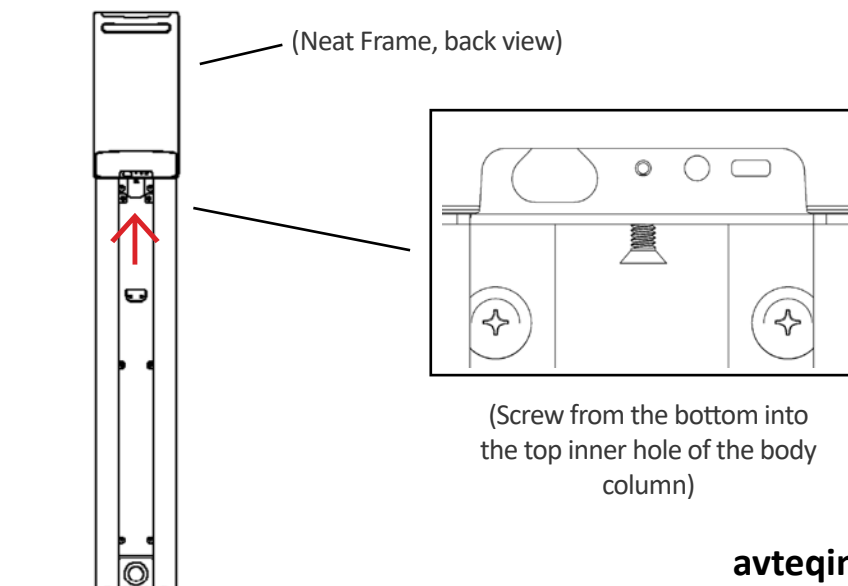
- Place body column (B) on top of the base plate (A) and screw it on from the bottom of the base plate with [x3] flat headed 3/8-16 1.25" screws (F).



## STEP 2

### Secure the Neat Frame

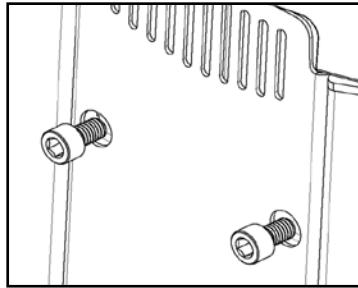
- Place the Neat Frame on top of the body column (B).
- Secure the Neat Frame with a [x1] flat 1/4-20 1/2" screw (D). Screw from the bottom into the top inner hole of the body column.



## STEP 3

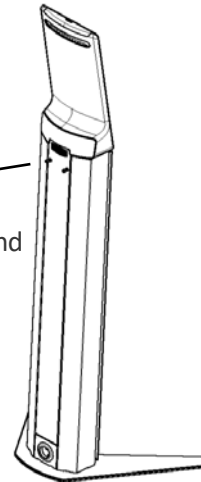
### Secure rear cover to the body column

- Place the rear cover (C) behind the body column (B).
- Secure the rear cover using a wrench and [x2] socket M6x1.0 10mm screws (E) and screw into the two top holes of the rear cover.



(Top holes of the rear cover)

(Screw from behind  
the rear cover)



**Have a question?**

Contact us at [support@avteqinc.com](mailto:support@avteqinc.com)