

# Neat Pad In-Wall Mount

## Designed for the Neat Pad Touch Panel

AVTEQ's Neat In-Wall Mount is designed specifically for the Neat Pad Touch Panel, enhancing security, accessibility, and seamless integration with the Neat Video Bar series.

Mounting the Neat Pad in-wall prevents damage or loss while providing easy access to the touch screen controller. The panel fits securely within the in-wall box, which is designed for standard wall depths. A faceplate ensures a secure fit, and the mount supports both pre-construction and post-construction installations. It comes in a sleek, glossy white finish.

Explore more Neat solutions on our Neat Solutions page.

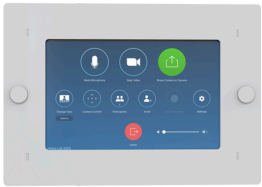


Neat Pad In-Wall Mount 1



### FEATURES

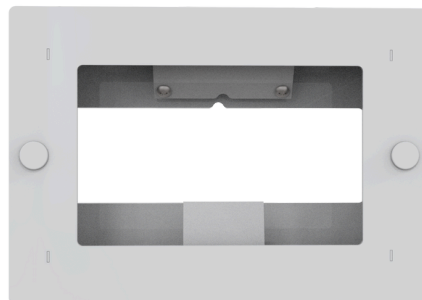
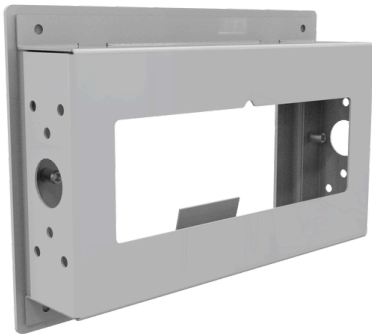
- In Wall Mount
- Wall box with finishing cover- Hardware included
- Gloss white finish
- TAA Compliant and Made in the USA



Neat Pad In-Wall Mount Front

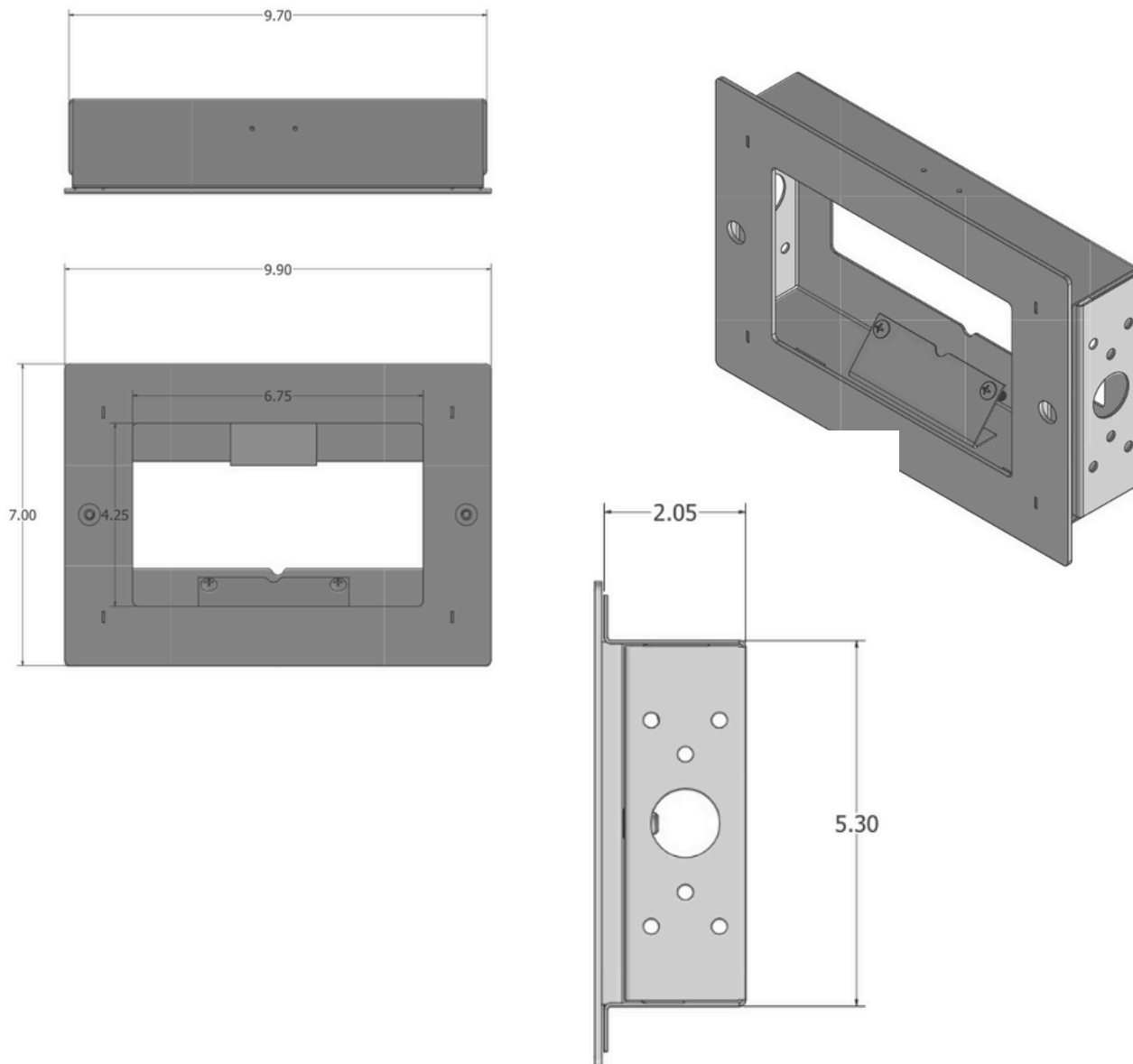


Neat Pad In-Wall Mount 2



Neat Pad In-Wall Mount

## DIMENSIONS



SPECIFICATIONS	
PART NUMBER	NEATPAD-WMP
FRONT FACE PLATE DIMENSIONS	9.90" wide by 7" tall
WALL BOX DIMENSIONS	9.70" wide by 6.25" tall
MATERIAL	Steel
FINISH	Gloss White Powder Coat



Call 800.285.8315 or visit [AVTEQ.net](http://AVTEQ.net)

© 2024 Avteq Inc. All rights reserved. All specifications subject to change without notice. Trademarks used herein are the property of Avteq Inc. or of their respective owners.